

# Welcome

To Bymosevej – Studenthousing



## Welcome as a new resident at Bymosevej!

### The department

The department is part of Østjysk Bolig and consists of 103 apartments of different sizes. The department is student housing, which means that you can live in the apartments as long as you are enrolled in an educational programme. In the department there is also an offer for vulnerable youths, called ‘Ungetilbuddet’. As part of this offer the youths receive help and support as well as building a social network.

### Community house

There is a community house within the department, which is located at Bymosevej 194. The house is available for all residents but is reserved by “Ungetilbuddet” on certain occasions. During the daytime there are two social workers, that are available for the youths in “Ungetilbuddet”.

In the communal house there is a number of facilities, including a foosball table, a ping pong table, a pool table, and a television that you are welcome to use. There is also a fridge as well as kitchen utensils for free use. All food in the kitchen belongs to “Ungetilbuddet”. (See Rules for more info.)

### The communal house is undergoing renovations until mid 2023.

### The department board

The department board sends all information on the departments Facebook-group ‘Bymosevej Ungdomsboliger’, in addition the department board can also be contacted through this group. If you don’t have or use Facebook, we would very much appreciate a note to be placed in our mailbox, 126, which is located by the laundry room. In the group it is possible to share information between residents. A lot of communication in the group is in English – otherwise Facebook can translate.

### **Bymosevej ungdomsboliger** >

🔒 Privat gruppe · 128 medlemmer

[Bliv medlem af gruppen](#)

Every apartment has a room in the basement, and you are responsible for this. It is recommended that you buy a padlock and place valuables and beverages out of sight, to reduce the risk of theft.

According to the rules, you are allowed to house one cat or one dog in your apartment. Smaller animals in cages are also allowed.

Once again, welcome!

We are excited to meet you.

Sincerely,

*The department board (Afdelingsbestyrelsen)*

## Presentation of the department board

At Bymosevej department 12 we have a department board. They can be contacted in the case of questions, ideas, criticism, or anything else you have in mind. The board also arranges various events during the year (see more under 'Activity Calender') who also made this flyer!

The department board can mainly be contacted through Facebook. But you are also welcome to reach them through Østjysk Bolig's webpage or contact one of the members directly.



Line Hornbech Poulsen  
**Chairwoman**



Christina Gormsen  
**Vice Chairwoman**



Nikita Christensen  
**Cashier/Writer**



Lisette Møller  
**Member**

## Communal Garden

In the communal garden you can find thyme, rosemary, mint, chives, basil, parsley, lemon balm and strawberries. These are for everybody to take and use.

If you have a green thumb and have an interest for gardening, you are more than welcome to help maintain the grounds.

The communal garden is located behind the mailboxes by the laundry room.



## Rules for the area

As we have 103 apartments - with even more residents - it is important to show consideration. You should therefore move calmly between the buildings and remember to think of your neighbours when turning up your speakers! We live close to each other, so it is important to not block the roads and paths, including the parking lots, bike sheds, and terrace areas. It is prohibited to drive on scooters and bikes between the buildings as these are pedestrian paths.

Please do not throw trash other places than the intended containers. When you empty your mailbox, please put the things you don't want in the bin instead of leaving it on top of the mailboxes.

**It is important to notice that it is prohibited to park on the fire safety roads!**

**From March 15<sup>th</sup> 2021 is there parking guards afflictive.**

Parking is only allowed in the marked parking booths, and in the gravel parking lot by the bulky waste containers - this applies from 00-24 o'clock all days of the week.



*The communal house*

## The communal house

Bymosevej 194

All residents are allowed to borrow the communal house. If you wish to do so, it is possible to reserve it by using the calendar hanging inside it. The calendar also shows which days "Ungetilbuddet" are using it. You cannot use the communal house when "Ungetilbuddet" uses it.

There is a speaker that can be borrowed for a deposit of 500 DKK from the department board. Contact the board for more information.

**When using the communal house, you must follow these rules:**

1. The event must not disturb the neighbours after 23:00 (11 pm). The party should be held inside the building, not around it. When using the speakers, the windows and doors must be closed, so the music and noise won't be disturbing.
2. Smoking and taking drugs is not allowed in the communal house.
3. Cleaning should be done before 12:00 (noon) the following day so there can be events the following day as well.

Cleaning includes:

- Vacuuming.
- Mopping the floor.
- The tables should be cleaned and positioned as when you arrived.
- The ping pong table, pool table and the foosball table must be cleaned after use
- The kitchen must be cleaned and dishes washed.
- The bathrooms must be cleaned.
- Trash bins must be empty, and empty bottles should be in the glass container.
- All trash, food, vomit and other things must be removed.

**If these rules aren't complied with, stricter rules will be made and possibly control when borrowing.**



## Garbage and bulky waste

At Bymosevej we recycle! This means that you will find three garbage containers by the parking lot. One container is for glass, plastic and metal, one for cardboard and paper, and two for regular garbage. Paper and cardboard that is too large for the paper container can be put in the bulky waste container.

*If garbage is left next to the containers, they may not be emptied, so please don't do that!*



Bulky waste, for example old furniture, can be put into the bulky waste container at the gravel parking lot. It can be opened on the front and on the side. It cannot be stressed enough that bulky waste should be placed inside the container if possible - *it is a huge no-go to just leave it unless the object doesn't fit in the container. NO food waste can be left at the bulky waste container under any circumstances!*

## Laundry room

Bymosevej 92

The laundry room is located at the end of the second block on the left (seen from the parking lot) among the single room apartments, and is available for use 24 hours a day. You need to use your laundry chip to enter the room as well as book timeslots. It is a good idea to book the washing machines in advance.

Payment for use of the machines will be drawn over the rent after use that month.

When booking a timeslot: remember to be on time! The reservation is cancelled if the machines are not in use 15 minutes after the booked time.

Remember to always tidy up after yourself! Make sure to empty the machines completely after a wash, so you do not forget anything that the person after you will have to remove.

If you want to use a machine that is done, but still full of clothes, you can put the clothes in one of the laundry basket. Often people leave their own bags/hampers, though, where you can also move the clothes to.

### Remember:

Wash underwire bras in a washing bag

Empty all pockets before washing

The machines are only for washing clothes and other textiles

**It is strictly prohibited to use the machines for coloring clothes!**

It is not allowed to use your own detergent or fabric softener! The machines dosage these automatically based on your settings.



**The laundry room is emptied of forgotten clothes the 1<sup>st</sup> Sunday in every month.**

Forgotten clothes are clothes that have been in the laundry room for a longer period of time without being collected by its owners. If clothes are obstructing your wash time – in the baskets, washing machines and/or dryers – the clothes can be laid on the table until the owners collect it.

# Your apartment!

You have moved to an apartment and not a dorm room, meaning there is a lot of practical things you are responsible for doing and paying. Among others these are water, heat, electricity and internet connection. We will now try to give you an overview. **NB:** Be aware that the stove is induction.

## Water

You will automatically receive reminders about your water use. During the year you do not have to do anything other than pay the bills. Once a year Århus Vand will contact you to ask for a reading of your water meter.

When moving in, it can be a good idea to contact Århus Vand to make sure they have registered you as a new tenant so you are not accidentally billed for the previous tenants water use.

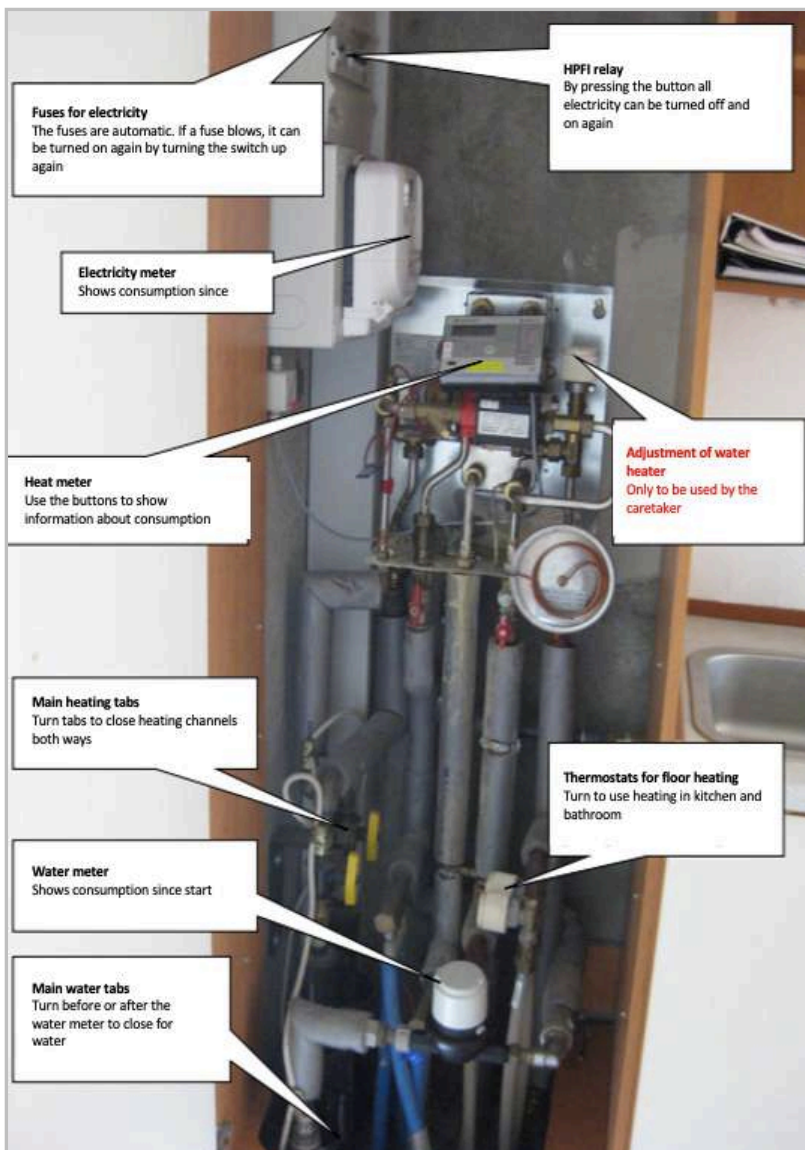
## Heat

Like with the water supply you will also automatically receive a reminder about your heat use. Unlike the water use, Aarhus Affaldsvarme measures the use of heating directly through the system and you do not have to do anything.

It is also here recommended to be especially aware when moving in! Check your first bill to make sure you do not pay for a longer period of time than you have rented the apartment.

## Electricity

In order to have electricity in your new apartment, you have to find and pay a supplier on your own. NRGi and Aura are the suppliers tied to Bymosevej but you are of course welcome to find another.



## Internet and TV

Fibia is the antenna provider at Bymosevej – meaning that they are responsible for the Tv and internet. You automatically pay for an antenna subscription through your rent, which is DKK 179. This covers a TV package but you can always call Fibia and change the package size or change it to an internet connection.

You can find an order form for the different packages Fibia sells on Østjysk Boligs webpage under department 12. This form is only available in Danish.

## Things you can borrow:

- Drill.
- Speakers.
- Moving trolley.
- Plates, utensils etc. for 20 people.
- Window cleaning equipment.
- Key for the poles outside.

Contact the department board for more information.



## Surrounding area!

It can be difficult to get a good overview of the area when you just moved here. We have therefore put together a small list of our go-to places that will be nice to know when you need to embark on your first shopping trip or have to find the quickest bus to town.

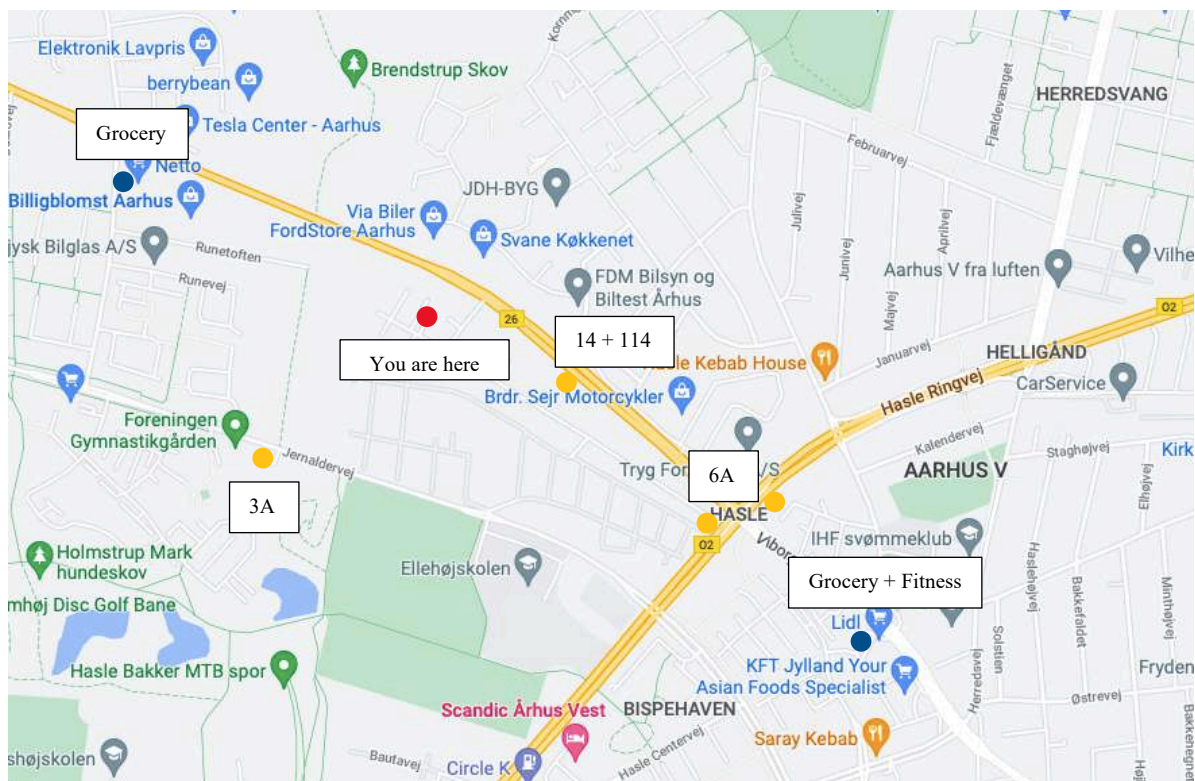
**3A Tilst/Rutebilstationen (bus station)** – 3A is a good choice if you have to go to for example the train station or Kloostertorv. 3A mainly drives along Viborgvej on the way to downtown.

**14 Sabro/Grøfthøj** – An alternative way to get to the train station, bus 14 stops among other places at Park Allé.

**114 Viborg/Hammel/Århus** – Another alternative way to get to the train or bus station.

**6A Skåde/Risskov** – If you have to go to either Viby J, Skejby or Risskov this is a good choice. 6A mainly drives along Ringvejen.

You can also use [www.rejseplanen.dk](http://www.rejseplanen.dk) to help you figure out and plan your journey.



There are plenty of grocery stores well within walking and biking distance of Bymosevej. On this map we have marked the four closest, **Netto, Lidl and Fakta**. Hasle Torv also has shopping opportunities such as a pharmacy and different restaurants/take out places.

If you are going on a bigger shopping trip both **Bilka** and **Storcenter Nord** are recommended. Bilka is placed further out on Viborgvej and is easily reached by bus 3A and 114. Storcenter Nord cannot be reached directly through a single bus but only takes 15 minutes on bike to get to. There are lots of different shopping possibilities here as well as the grocery stores Netto and Føtex.

For the nature and sports interested we highly recommend a walk or run in the attractive nature area at Jernaldervej. Here lies **Runebakker**, drawn with a green circle on the map. Here are multiple path systems around and over the lakes and hills for both walking, running and mountain biking. From the top of the hills are a wonderful view over Århus and nearby area.

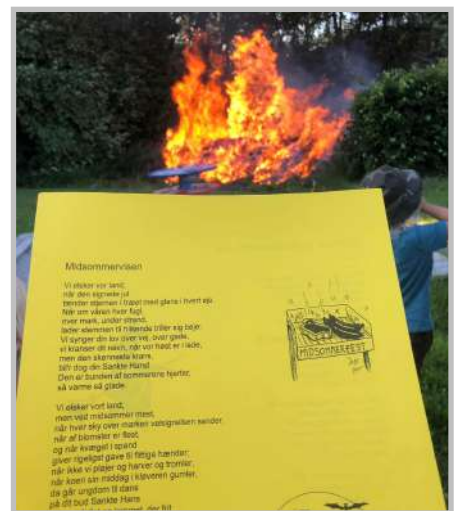
# The department boards activities

2023

## Activity Calendar for Bymosevej Ungdomsboliger

SPRING	SUMMER	FALL	WINTER
<ul style="list-style-type: none"> <li>• Gardening day</li> <li>• Theme party</li> </ul>	<ul style="list-style-type: none"> <li>• Midsummer</li> <li>• Summer party</li> </ul>	<ul style="list-style-type: none"> <li>• Department meeting (September)</li> <li>• Halloween</li> </ul>	<ul style="list-style-type: none"> <li>• Christmas party</li> </ul>

### Pictures from previous activities



If you have any ideas for activities, are you more than welcome to contact the department board.

Due to renovation of the communal house will dates for the coming activities be announced on our Facebook group.

**Please be aware that events might be cancelled due to Covid-19!**

If you think that planning these events sound exiting, or if you're interested in knowing more about what it's like to be a part of the board. Then you are more than welcome to contact the board on Facebook, our mailbox or via personal contact. We are always looking for new members because this is student-housing, and residents are moving in and out. If you already know that you wish to be a part of the board, we hope to hear from you.



## Overview of the area

